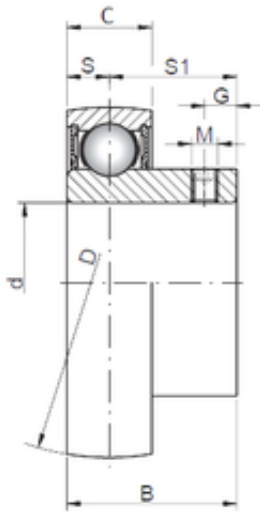




BEARING MANUFACTURING DE MEXICO, S.A.D...



20 mm x 47 mm x 25 mm ISO SB204 deep groove ball bearings

Bearing No. SB204

Size	20x47x25 mm
Bore Diameter	20 mm
Outer Diameter	47 mm
Width	25 mm
d	20 mm
D	47 mm
B	25 mm
C	14 mm
S1	18 mm
G	4,5 mm
S	7 mm
Bolt (G)	M6X1

SB204 Bearing 2D drawings and 3D CAD models