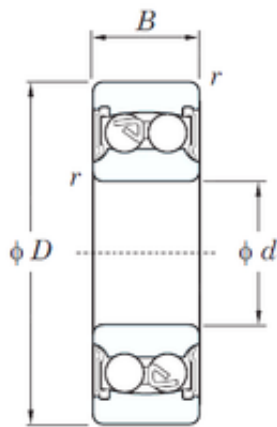




BEARING MANUFACTURING DE MEXICO, S.A.D...



30 mm x 72 mm x 27 mm KOYO 2306-2RS self aligning ball bearings

Bearing No. 2306-2RS

Size	30x72x27 mm
Bore Diameter	30 mm
Outer Diameter	72 mm
Width	27 mm
d	30 mm
D	72 mm
B	27 mm
C	27 mm
r min.	1.1 mm
da min.	37 mm
da max	37.8 mm
Da max.	65 mm
ra max.	1 mm
Weight	0.500 Kg
Basic dynamic load rating (C)	21.3 kN
Basic static load rating (C0)	6.30 kN
(Grease) Lubrication Speed	5800 r/min
Calculation factor (e)	0.26
Calculation factor (Y0)	2.52
Calculation factor (Y1)	2.40

2306-2RS Bearing 2D drawings and 3D CAD models